

These expanded one bedroom suites provide additional living space, including a large bedroom and a spacious living room. All of the units also include a large private bath with walk-in shower. Many units include views of the surround natural area.



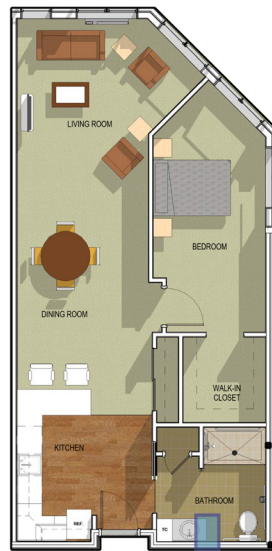
**SIX MILE ONE BEDROOM SUITE**  
539 to 677 Square Feet

These expansive one bedroom suites provide the highest of quality living space including a large bedroom with walk-in closet, in-unit kitchenette with dinning area, and a spacious living room. All of the units also include a large private bath, walk-in shower, and additional closet storage. Many units have optional views of the surround natural area.



**CAPITAL VIEW CORNER SUITE**  
868 to 878 Square Feet

These exclusive one bedroom wrap-around suites provide panoramic views in a high-end living space including a large bedroom with walk-in closet, in-unit kitchenette, and a spacious living room. All of the units also include a large private bath, walk-in shower, and additional closet storage. Many units have optional views of the surrounding natural area.



**WRAP-AROUND SUITE**  
848 Square Feet

These expansive studio apartments provide quality living space including a separate living area and sleeping space. All of the units also include a large private bath and walk-in shower. Many units have optional views of the surround natural area.



**PRAIRIE STUDIO**  
442 to 563 Square Feet